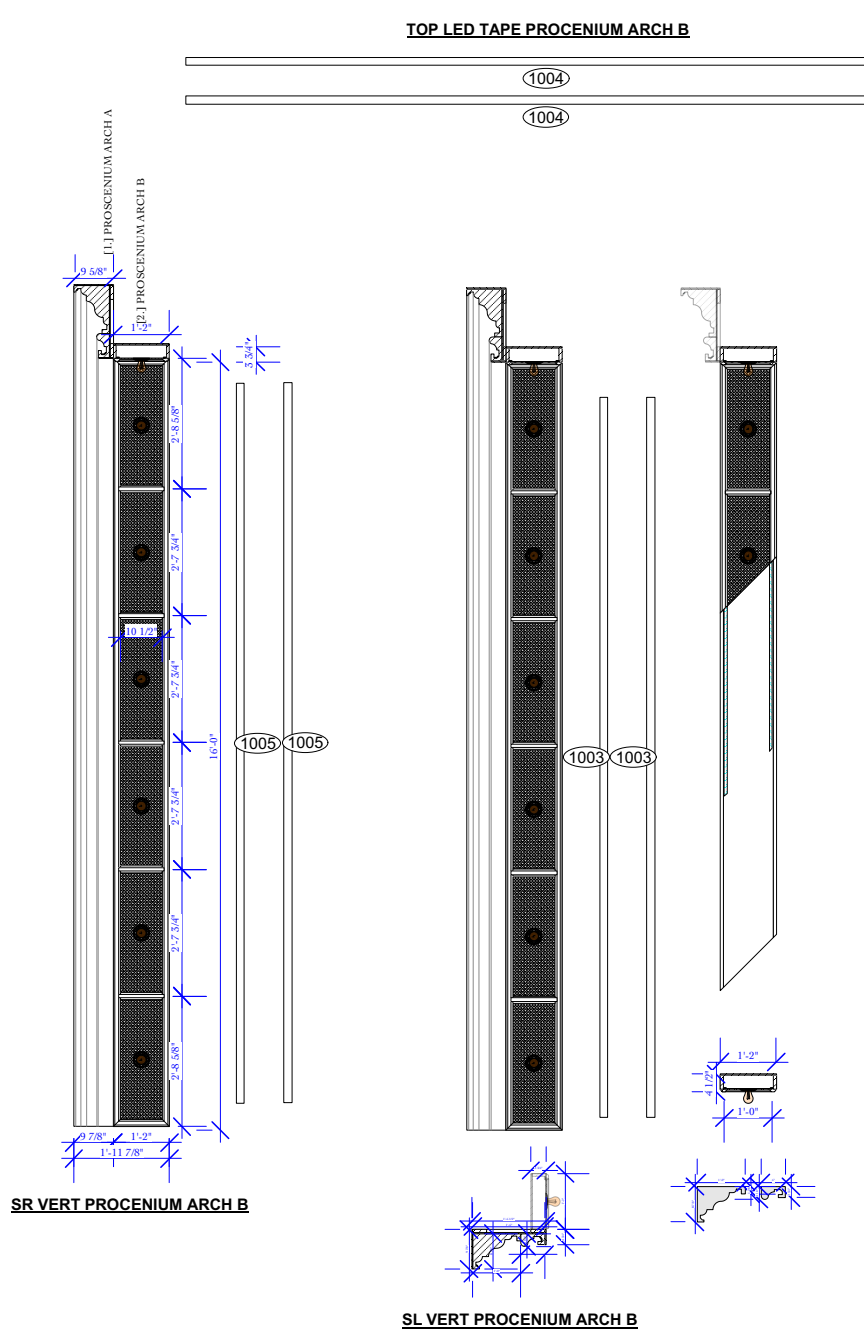
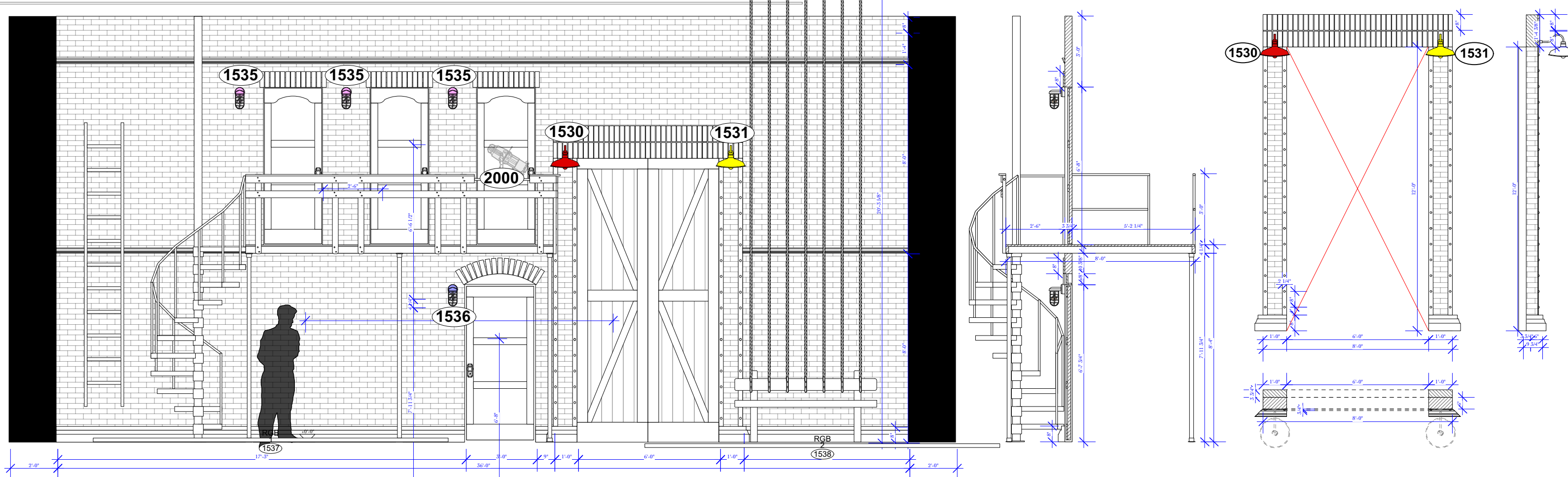


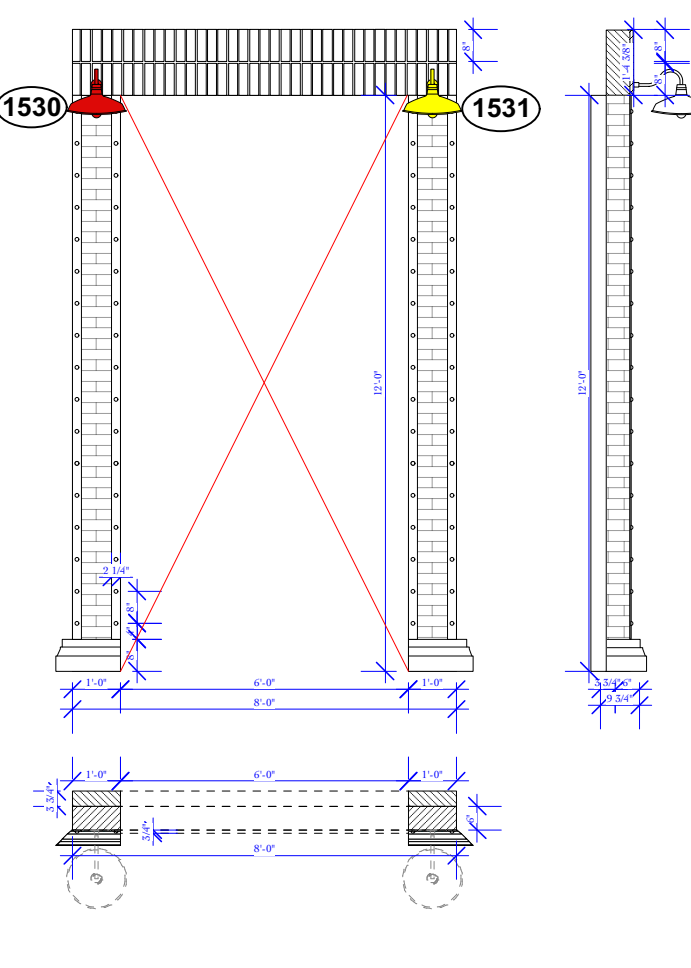
1500 1501 1502
FALSE DETAIL
DETAIL



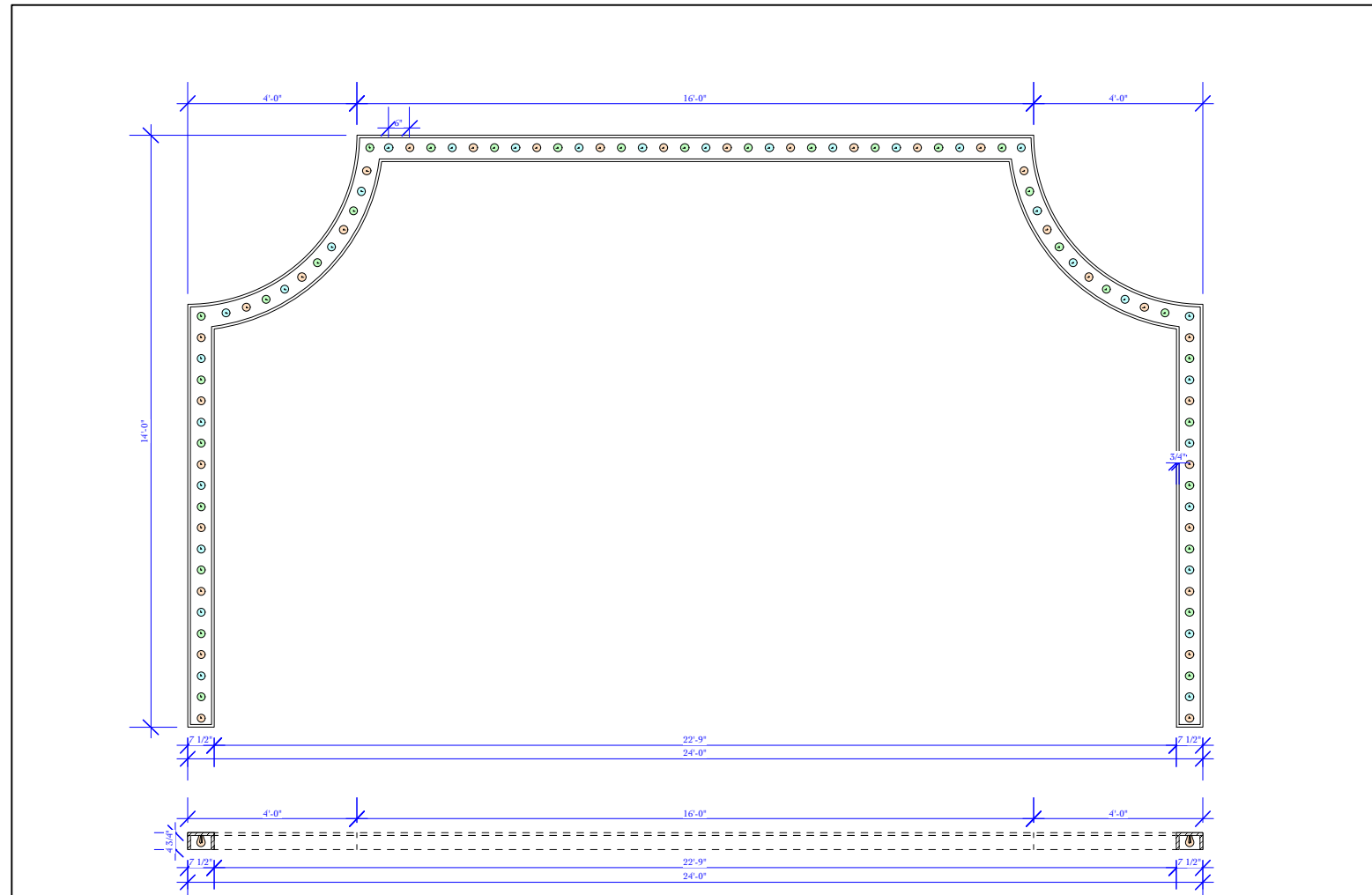
1505 1506 1507
PROCENIUM ARCH B
DETAIL
23 (BULBS)



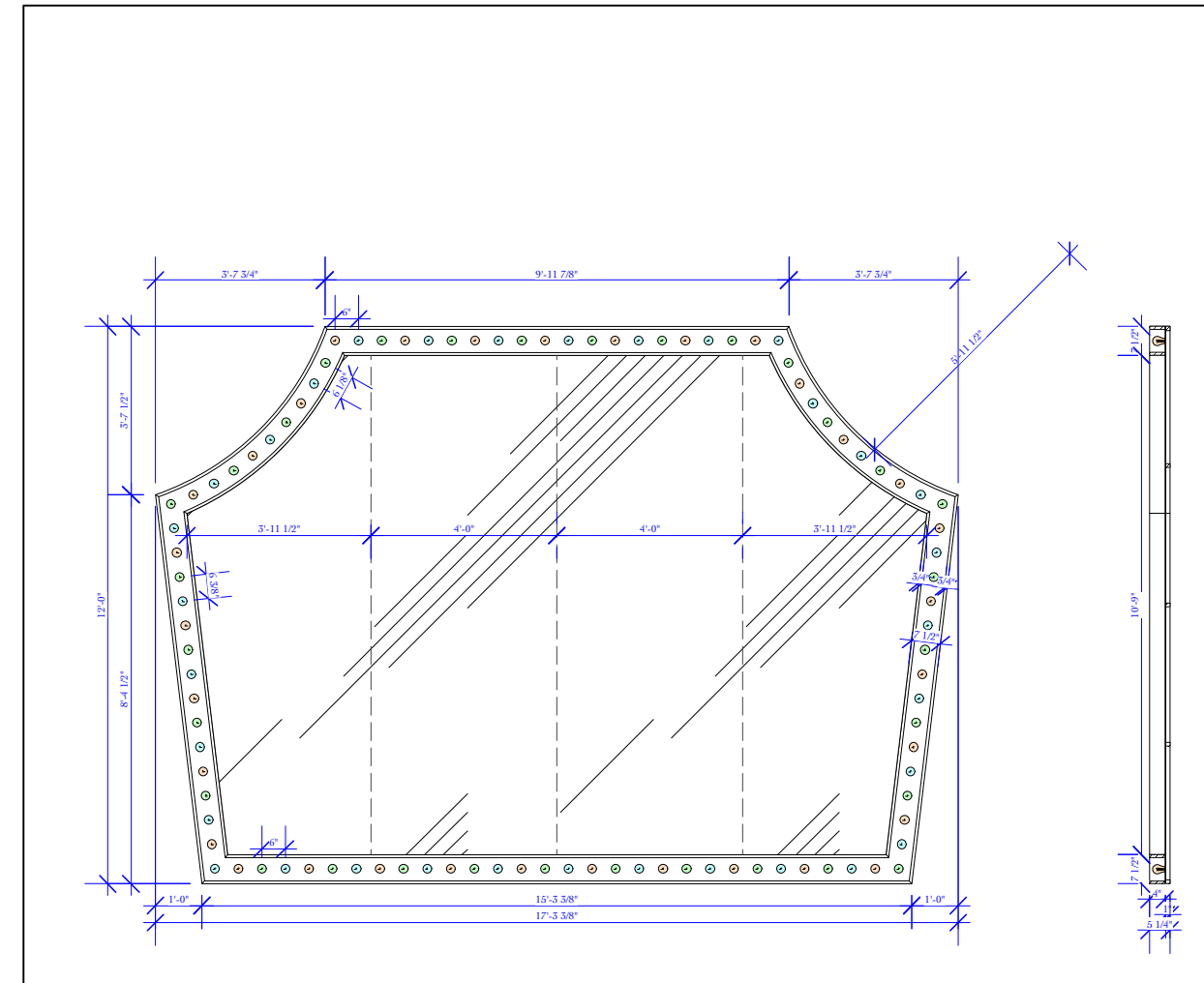
1535 1536 2000
UPSTAGE GALLERY WALL
DETAIL
NOTE: LED RGB TAPE IN BASE BOARD OF GALLERY WALL
(4) JELLY JARS
(1) S4 36 DEGREE w/ SPOT HANDLE, DROP IN IRIS, R132
4 (BULBS) (1) 750w HPL



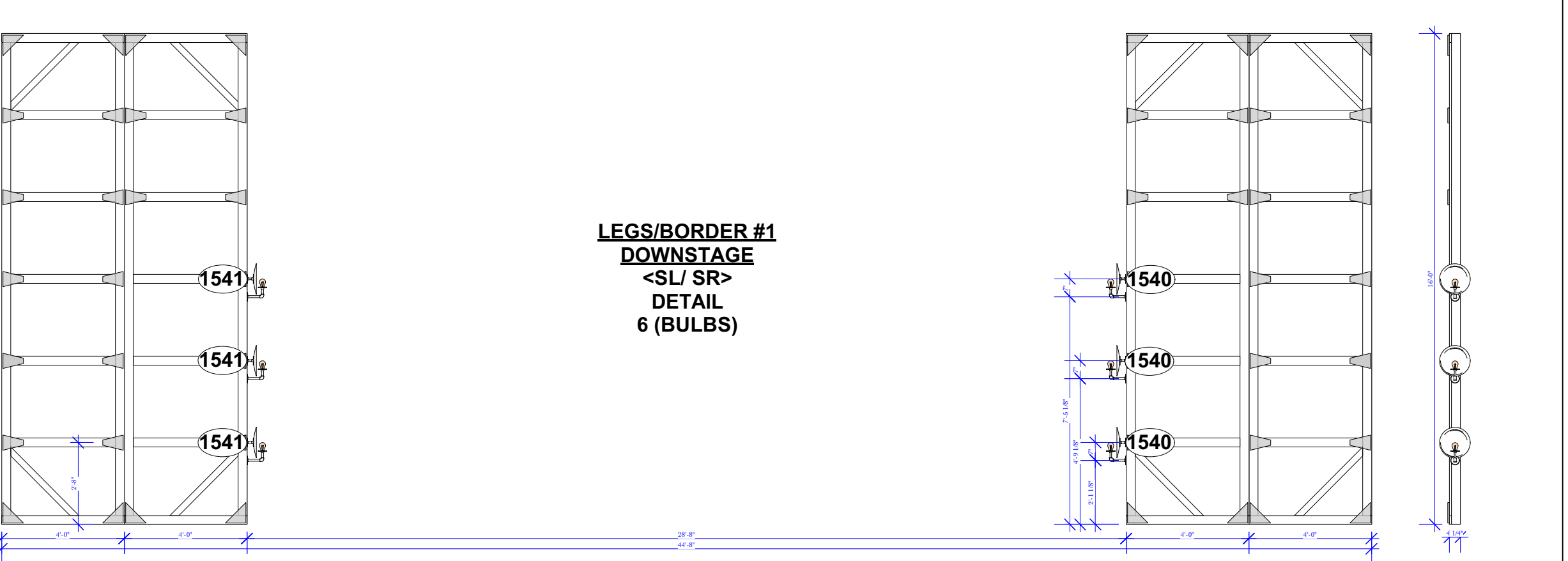
1530 1531
UPSTAGE GALLERY WALL DOOR
DETAIL
2 (BULBS)



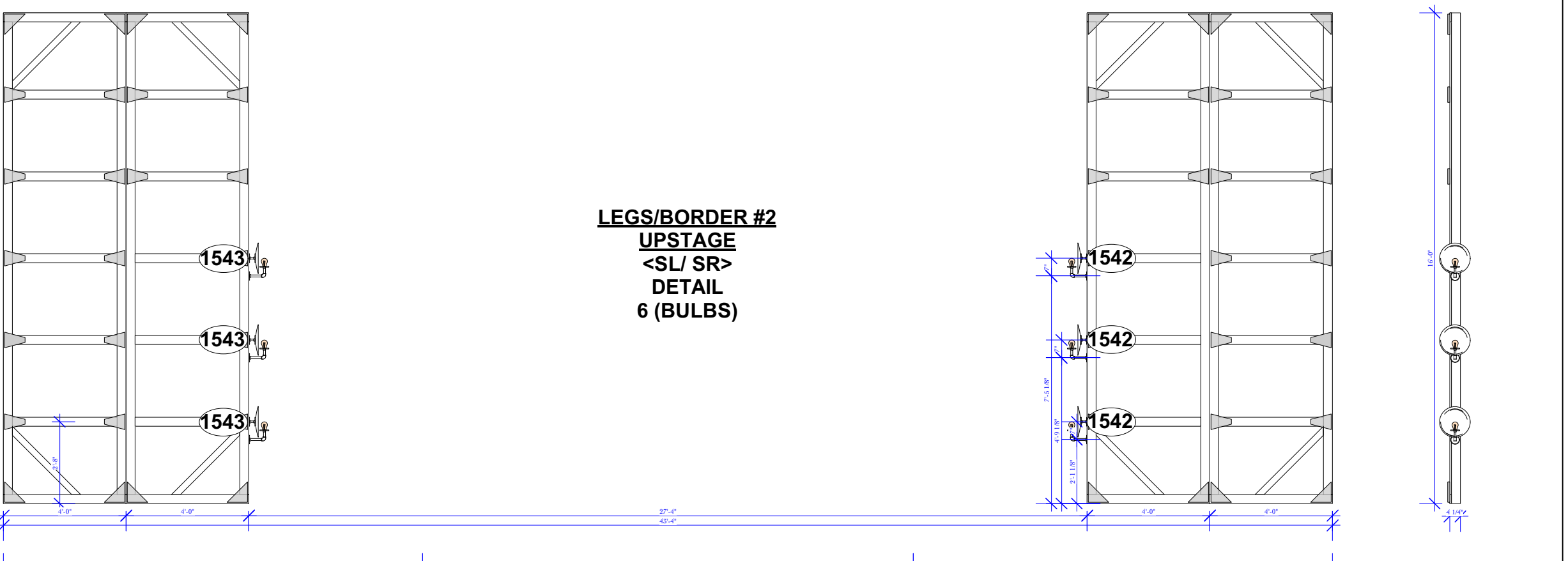
1580 1581 1582
FOLLIES MIRROR
DETAIL
94 (BULBS)



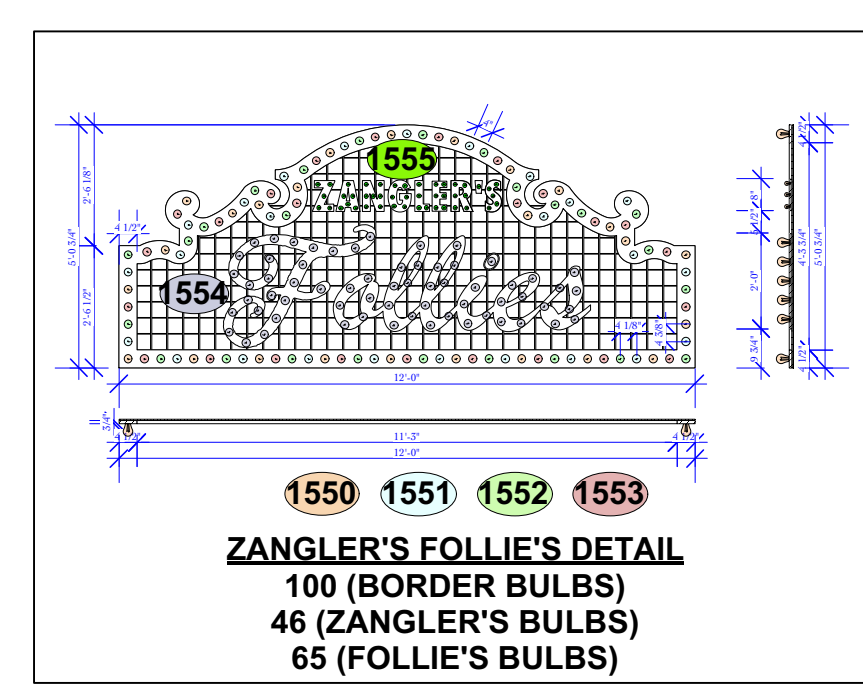
1590 1591 1592
FOLLIES MIRROR
DETAIL
98 (BULBS)



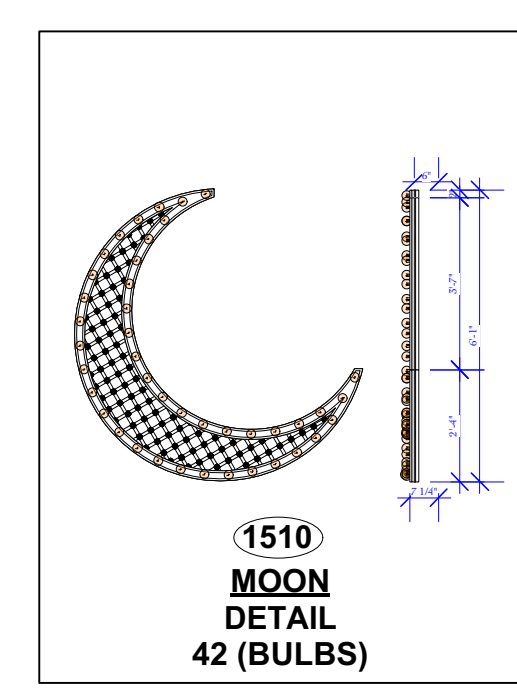
1541 1540
LEGS/BORDER #1
DOWNSTAGE
<SL/ SR>
DETAIL
6 (BULBS)



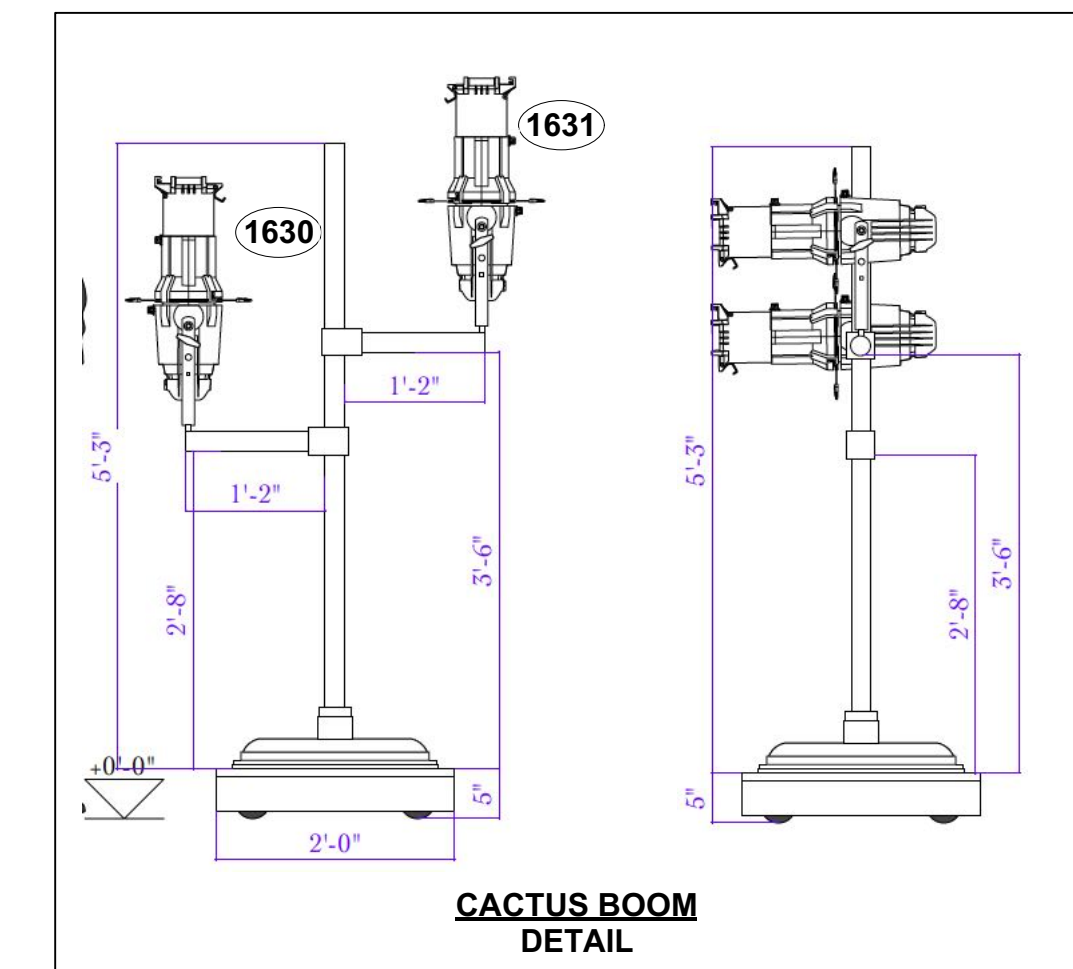
1543 1542
LEGS/BORDER #2
UPSTAGE
<SL/ SR>
DETAIL
6 (BULBS)



1550 1551 1552 1553
ZANGLER'S FOLLIE'S DETAIL
100 (BORDER BULBS)
46 (ZANGLER'S BULBS)
65 (FOLLIE'S BULBS)



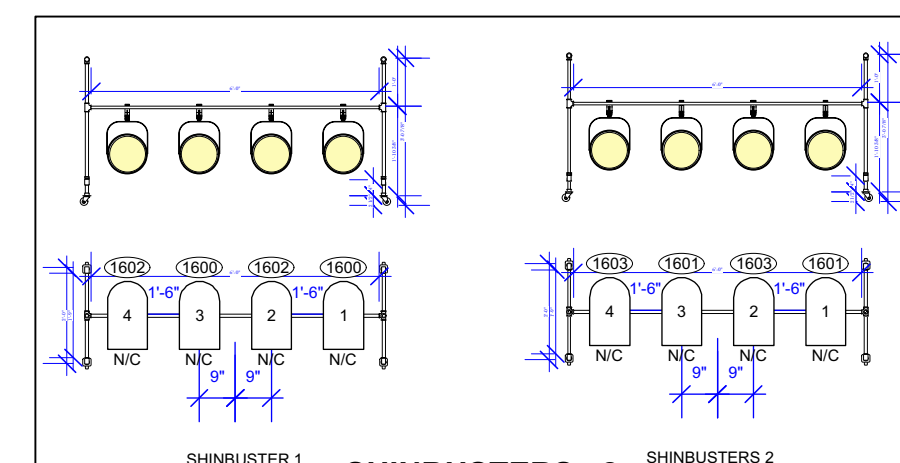
1510
MOON
DETAIL
42 (BULBS)



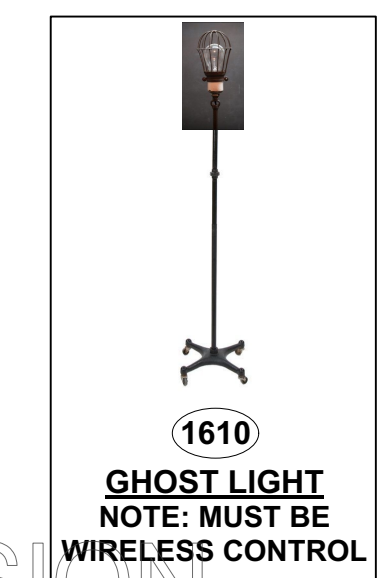
1630 1631
CACTUS BOOM
DETAIL



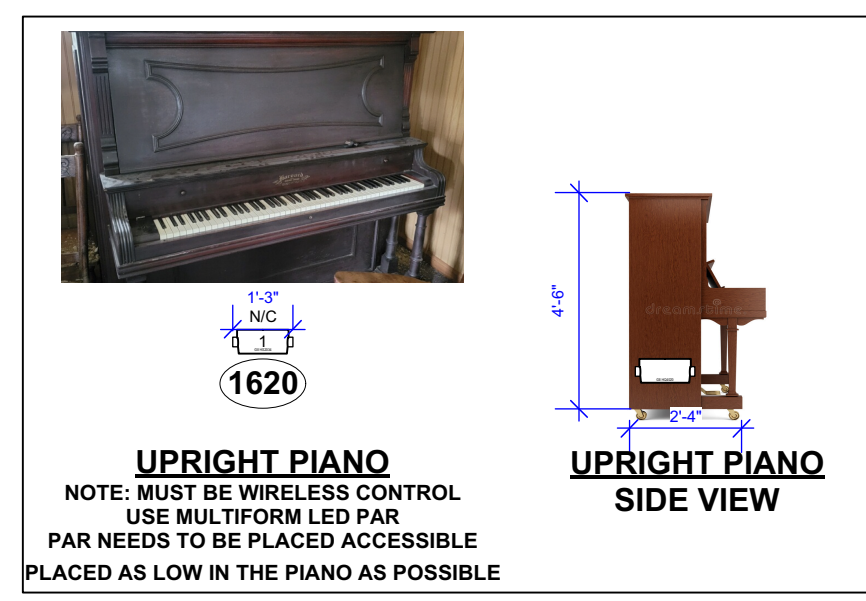
1520
GAIETY PLAYHOUSE
23 (BULBS)



1620 1621 1622 1623
SHINBUSTERS x2
DETAIL
NOTE: PLEASE USE CHROMED PAR 64



1610
GHOST LIGHT
NOTE: MUST BE WIRELESS CONTROL



1620
UPRIGHT PIANO
NOTE: MUST BE WIRELESS CONTROL
USE MULTIFORM LED PAR
PAR NEEDS TO BE PLACED ACCESSIBLE
PLACED AS LOW IN THE PIANO AS POSSIBLE



1620
UPRIGHT PIANO
SIDE VIEW

- MAC MARTIN VIPER PROFILE 1000w AC
- MAC QUANTUM PROFILE 475w LED
- MAC PERFORMANCE 2000 1.2w AC
- CHAUVET ROUGE 1X WASH
- ETC S4 ZOOM 15-30 DEGREE 575w
- ETC S4 ZOOM 25-60 DEGREE 575w
- ETC S4 19 DEGREE 575w
- ETC S4 26 DEGREE 575w
- ETC S4 36 DEGREE 575w
- ETC S4 JR. 26 DEGREE 575w
- ETC S4 JR. 36 DEGREE 575w
- ETC S4 PAR WFL 575w
- ETC S4 PARNEL 575w
- ALTMAN PAR S4 1000w
- COLORTRAN 6" FRESNEL 750w
- MR16 PAR BIRDE WFL
- ETC COLORSOURCE CYC
- CHAUVET COLODADO BATTEN 72
- STRAND CENTURY 4-Cell CYC 1000w
- ALTMAN 3-CELL ZIP STRIP 75w
- RGBW LED TAPE
- CHAUVET AMPHAZE STADIUM

NOTES

- No substitutions without designers approval.
- Please have all color and templates dropped prior to focus.
- All trims are to house deck, unless otherwise specified
- Hang all units on 18" centers unless noted.
- Refer to hook up for all color, template, and accessory information.
- Deck mounts and Set mounts will be determined by Designer
- Please have spare data and circuits on each electric.
- Deck and bridge mounted unit placement will be determined by Designer
- Please have extra R119, R132, R113

This drawing represents design intent and concept
The designer and assistant designers are responsible for visual aspects of the production only, and all specifications provided relate solely to the appearance of the lighting and not to matters of electrical and structural soundness and/or safety. The implementation of this design must comply with the most stringent applicable federal and local safety and fire codes. The designer is not qualified to determine electrical or structural appropriateness of the design and will not assume responsibility for damages resulting through improper engineering and/or implementation in the handling of the elements of the lighting design. The designer agrees to make prompt correcting alterations to any specification found to be incompatible with proper safety precautions.

LEGEND

- CHANNEL
- UNIT NUMBER
- TEMPLATE
- TOP HAT



PRESENTS



DIRECTED BY:
JOE BARROS
SCENIC DESIGN
MATTHEW IMHOFF
LIGHTING DESIGN
CHRISTIAN SPECHT
(229) 630-3209
CHRISTIAN.SPECHT5792@GMAIL.COM
MASTER ELECTRICIAN: ERIC NELSON

SCALE: 1/4" = 1' EXCEPT WHERE NOTED

SET PRACTICALS

6/4/2021
DRAWN BY: CMS
REV: 1 6/4/2021
REV: 2 6/6/2021
REV: 3 6/7/2021
REV: 4 7/6/2021
REV: 5 7/9/2021
PLATE NO.
3 OF 3